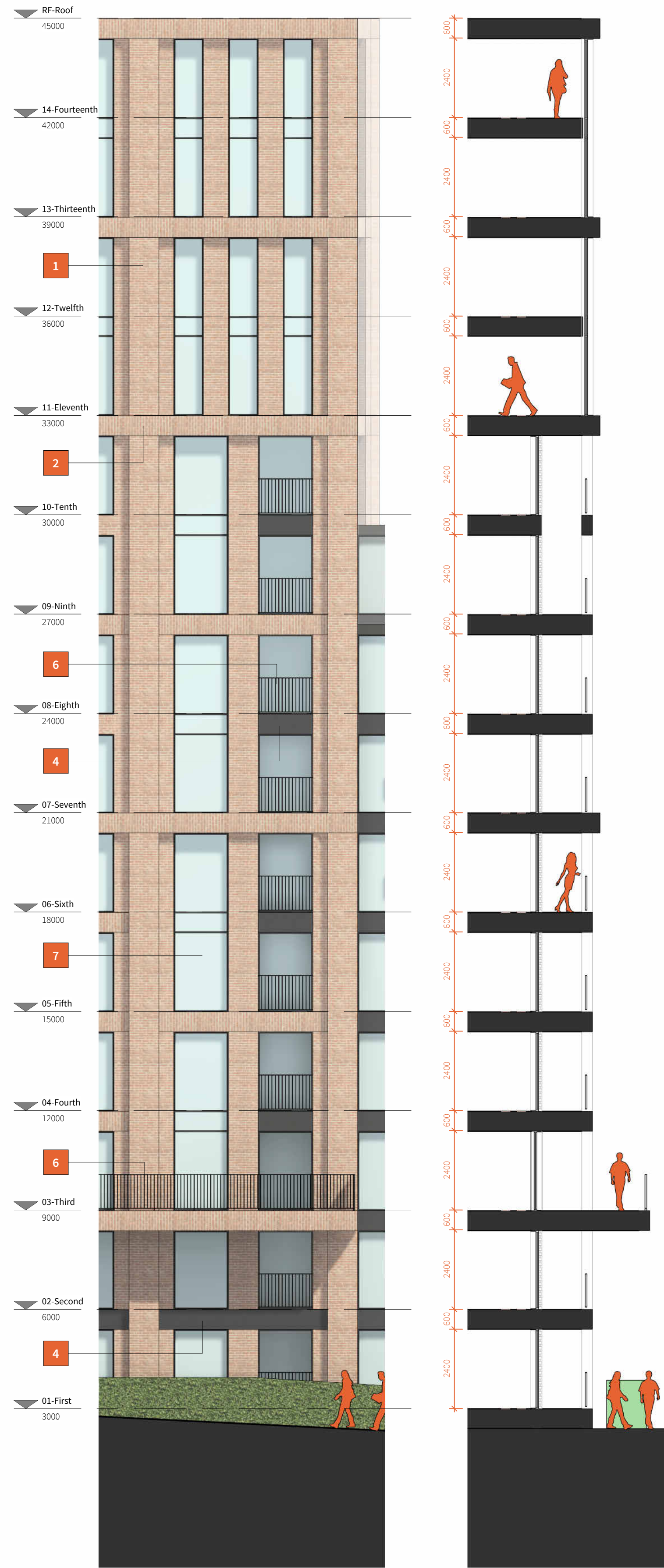


MATERIALS KEY

- 1 RED MASONRY BRICKWORK TO APPROVED SAMPLE
- 2 RED MASONRY BRICKWORK SOLDIER COURSE
- 3 CORTEN METAL RAINSCREEN CLADDING
- 4 BLACK COLOURED METAL RAINSCREEN CLADDING
- 5 BLACK LOUVRE SCREENING
- 6 BLACK VERTICAL METAL RAILINGS
- 7 GLAZED WINDOWS & DOORS WITH BLACK FRAMES
- 8 GLAZED CURTAIN WALL WITH BLACK FRAMES



K GA-Elevation_London Street Elevation Key
1:400

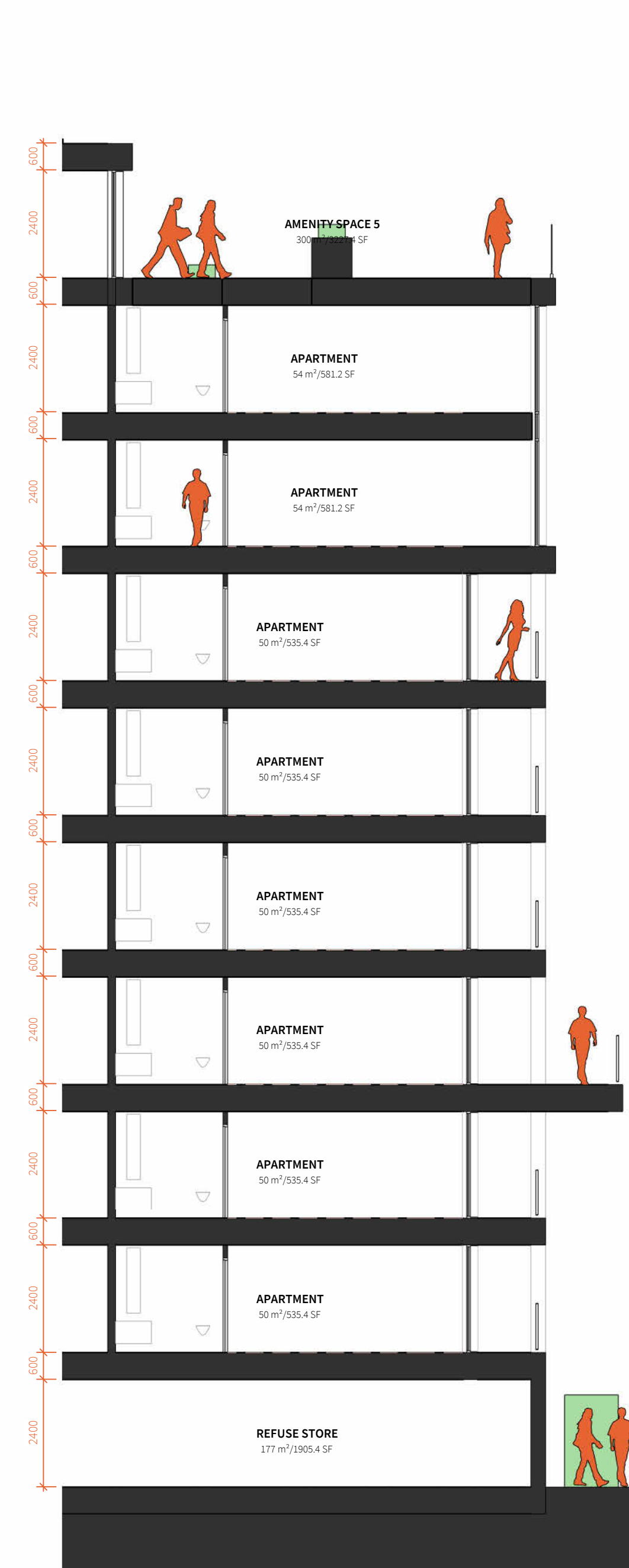


E1 GA-Elevation_London Street Bay Study 1
1:100

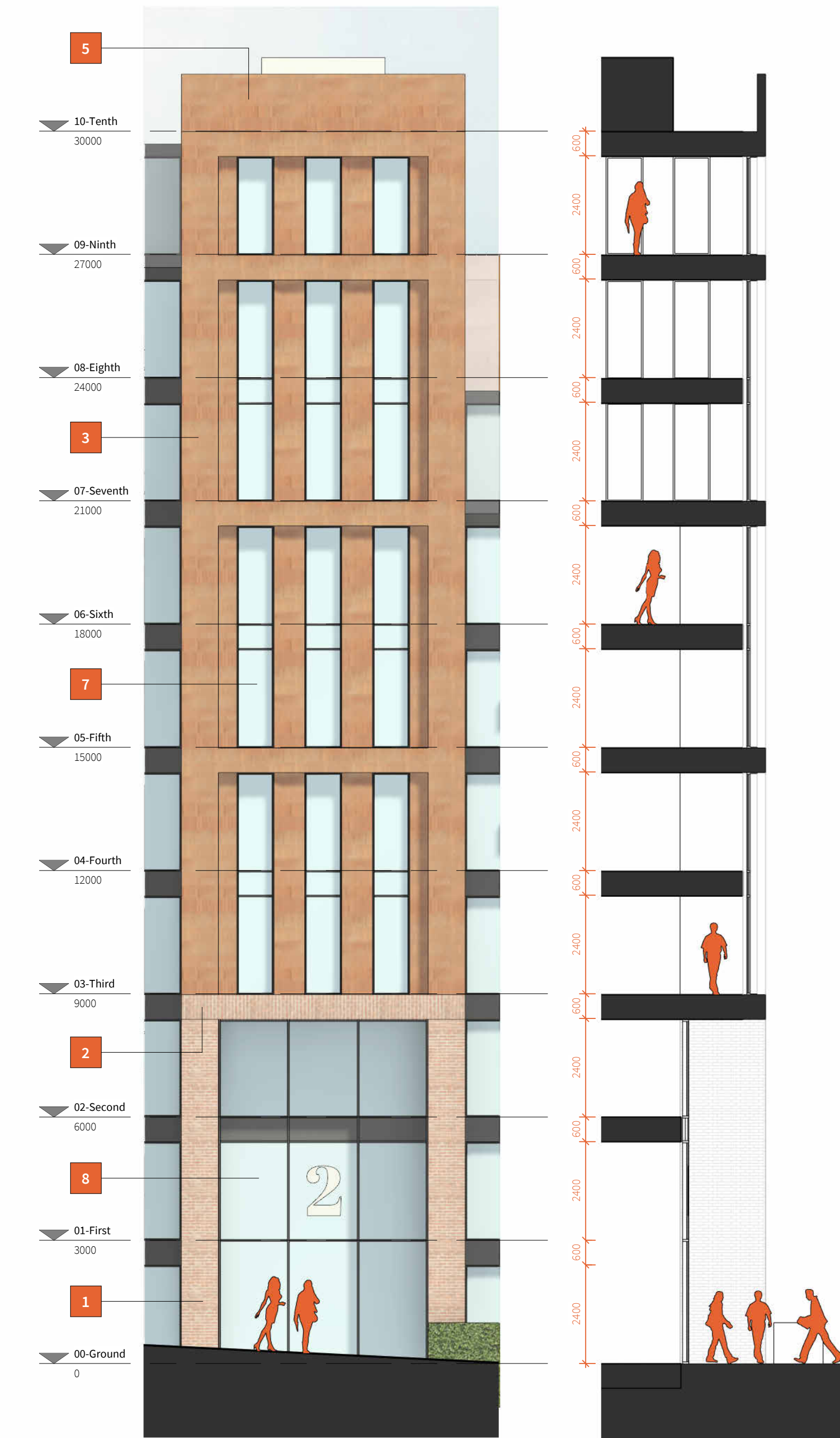
S1 GA-Section_London Street Bay Study 1
1:100



E2 GA-Elevation_London Street Bay Study 2
1:100



S2 GA-Section_London Street Bay Study 2
1:100



E3 GA-Elevation_London Street Bay Study 3
1:100

S3 GA-Section_London Street Bay Study 3
1:100

Four Architects Limited (11613893)
Note:
This drawing is copyright.
Do not scale dimensions from drawings.
All dimensions must be checked on site by
contractor or suitable qualified individual.
Contractor to report any discrepancies, errors
or omissions prior to commencing work.

Notes:

Project Title:
London Street

Location:
SMETHWICK

Drawing title:
Bay Study_Elevations_Sheet-01

Status:
PLANNING

Scale:
As indicated

Job Number:
21-019

Date:
31/05/2022

Drawing Number:
FA-DR-03-401

Revision:
P3



Four
Architects

113 Portland Street, Manchester, M1 6DW
Tel: 0161 4707969 Email: info@fourarchitects.co.uk